

Follow the Science to Petroleum Museum

Mark your calendars and come help us celebrate the Museum's 47th birthday!

We will
FOLLOW THE SCIENCE
to the Petroleum Museum on
Thursday, September 22!

The plan for a petroleum museum was originally conceived by George T. Abell, a Midland oil and gas producer. His idea was shared during many coffee sessions with friends and business associates at the historic Scharbauer Hotel in downtown Midland. In 1968, 539 petroleum industry leaders from Texas and the Southwest petitioned for incorporation and the Museum was established as non-profit institution that same year. The Permian Basin Petroleum Museum, Library and Hall of Fame officially opened in September 1975 and was dedicated in a ceremony attended by President Gerald R. Ford.

Over the years, the Museum added its North wing showcasing the industry's technology. The Transportation Wing was added in 2004, furthering our opportunity to focus on the sciences. In 2012 the Mineral Gallery opened expanding our geology and earth sciences programs. Then, in 2016, the petroleum



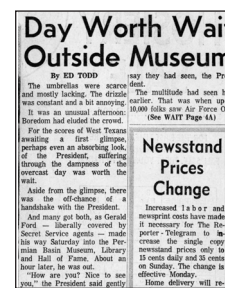
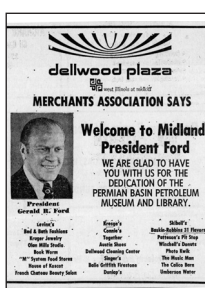
exhibits were totally renovated.

For 47 years, the Museum has told the story of the petroleum industry in the Permian Basin and highlighted the incredible technology the industry continues to develop. From nitro shoots to hydraulic fracturing, we have showcased this industry and the people who dedicated their lives to it. We look forward to celebrating 47 incredible years and more to come!

Follow the Science to our celebration on September 22. It will include *Gastronomical* delights catered

by Midland Meat Market, spirited *Libations*, and fascinating *Science Experiments*. So, let your inner geek come out, put on your classiest cocktail attire with a *scientific twist*, and explore where the science will lead you! Leave your tiny lab assistants at home, throw on a lab coat, and make sure that pocket protector is in place because we will be *following the science* with explosive scientific experiments. You won't want to miss this evening of hands-on exploration and experimentation at the Museum.

As always, your support gives us the opportunity to offer quality learning opportunities to visitors of all ages, showcase exceptional exhibits, and most importantly in today's world, stand as an advocate for the energy industry.



The Museum's opening featured President Gerald R. Ford. With him on the tour were the late George H.W. Bush and the late U.S. Rep. George Mahon, left photo, and the late Martin Allday, Bush, and his son, George W. Bush, third photo.



For ticket information, go online to pbpetro.org or call Luanne Thornton at 432-683-4403.

2022 Board of Trustees

Will Porter

President

Mark Carr

Vice President

Alan Krenek

Treasurer

Billy W. Harris

Secretary

Kip Agar

Gregg Baiano

Kline Boyd

R. Danny Campbell

Travis Counts

Ben Friedman

Brandon Gaynor

Trey Grafa

Laura Paige Innerarity

John Kennedy

Sally Kvasnicka

Joe Liberty

Donny McClure

Kyle Milling

Mike Oestmann

Wes Perry

Jim Woodcock

Max Wright

Kathy Shannon

Executive Director

**Permian Basin
Petroleum Museum,
Library and
Hall of Fame
...exploration,
innovations
and legends...**

Volunteer

Questions Never Cease to Amaze

"Is oil still being made?"

That is one of the questions that docent **Britt Meadows** is sometimes asked as he leads a group through the Petroleum Museum. And his answer is, "Yes, but it won't be available for a few million years."

When Meadows retired in 2019 from Oxy, he wanted to share his lifetime of petroleum industry knowledge with others. He showed up at the Petroleum Museum and started volunteering as a docent.

"I've learned a little bit in the 41 years I worked in the industry, and it seemed like a good thing to give back," Meadows said. With a father employed by Texaco, he grew up in the industry and started working in it when he graduated college in 1977.

His tour groups consist primarily of high school or college students, or adults on a team-building session. "The first thing I ask is, 'What is their concept of oil in the ground,' and the responses are varied," he said. The engineer takes the groups through the museum and relates the industry to things in their lives so they can understand it. "They often don't have a concept of what we do or the cost of what we do. It's up to me to explain how it costs a lot of money to produce the oil."

Meadows finds being a docent, "very satisfying to help increase people's knowledge of our industry and the challenges we face." He also encourages people to try the petroleum industry as a career choice. "The neat thing about this industry is I learned something on my first day and I was still learning when I left. There is still new technology coming along."

And there are still lots of questions from tour groups to answer. Thank you, Britt, for your service as a docent!



Britt Meadows

Mineral Gallery

Lavinsky Keeps Gallery On Top

The Museum is home to a variety of beautiful minerals which are featured in our Mineral Gallery. We often highlight one of these specimens in our newsletters. This quarter, however, we want to recognize an important donor who has impacted the Museum and its collections immensely over the last eight years. In 2014, **Rob Lavinsky** made it his mission to assure that our Mineral Gallery was full of incredible mineral specimens from around the world. Working with members of the Mineral Association of Dallas (MAD), he not only helped fill our cases, but has donated almost 50 minerals from his personal collection to the Museum over the years.

Dr. Robert "Rob" Lavinsky has been interested in rocks and minerals since he was a boy. He became a part-time mineral dealer at the young age of 14. His hobby of mineral collecting transitioned from summer collecting to a business after Lavinsky went to college. As an undergraduate student at Rice University, he took advantage of being close to the Houston Museum of Science and History, learning the trade and the business. By the time he graduated with a BS in biochemistry and a minor in ancient civilizations, Lavinsky had created his own mineral website with a broad selection of minerals, listing prices and values of each specimen.

Although tempted to drop out of school to become a mineral dealer, Rob earned his PhD in molecular genetics in 2000. The lure of selling minerals did, however, outweigh life in a lab and Rob chose to make his hobby his career. His impact in the mineral world is ongoing. He actively promotes educational opportunities, works with junior collectors, has helped with the PBS television show, Mineral Explorers and helped launch an annual mineral symposium in Dallas. Rob has also lent his expertise to the Petroleum Museum, leading several evening programs about minerals at the Museum over the years.

The Museum counts Dr. Lavinsky as a true friend of the Museum, both as a donor and a consultant. His collection is the cornerstone of the Museum's Mineral Gallery.



Dr. Rob Lavinsky

Collaboration Spreads Museum's Talents Across the State

Locally and throughout the state, the Museum staff works with other organizations to stay updated on the latest technology and to share special gifts to continue its mission to share the petroleum story.

From the East: Sharing at State TAM Meeting

Three of the Museum staff members were invited to present at the Texas Association of Museums Annual Meeting in Waco this spring. Teaming up with Heather Stover, Education Director at the Don Harrington Discovery Center in Amarillo, **Kathy Shannon**, **Mara Bland** and **Jenny Stubbs** helped fellow Museum professionals learn about the new student expectation in the Texas Essential Knowledge and Skills (TEKS) that requires students to visit a museum, library or science center to learn about STEAM (Science, Technology, Engineering, Art and Math) careers, either virtually or in-person. Both Museums offer on-site and virtual learning opportunities, so it was a wonderful chance to share "lessons learned" with fellow colleagues.



To the North: Working with Panhandle Plains



Staff from the Petroleum Museum worked with the Panhandle Plains Historical Museum (PPHM) educators to help them create their upcoming exhibition, *Objects of Enchantment and Fairy Tales Makerspace*. With the success of our STEAM Sprouts Fairy Tales classes where our youngest engineers designed and created innovative solutions to help fairy tale characters, our friends at PPHM in Canyon, Texas asked us to help them as they created their own Fairy Tale STEM exhibit. We were happy to share our ideas with our Panhandle neighbors in this STEM programming. If you and your family are in the Canyon area, visit the Panhandle Plains Historical Museum and experience their *Objects of Enchantment and Fairy Tales Makerspace* exhibit through April 2023.

Statewide: Archives Assists Magazine

The Petroleum Museum Library and Archives Center is home to one of the most complete and comprehensive archival collections of the petroleum industry in the nation. Private papers, company records, manuscripts, sound recordings, scrapbooks, photographs, motion picture films and maps all recount life in the oil fields, boom towns and board rooms. The Petroleum Museum Library and Archives Center serves as a resource for our community as well as journalists and students across the nation.

Over 10 years ago, a partnership began with *PB Oil & Gas*, the Permian Basin Petroleum Association Magazine. Our Archives Manager coordinates and sends photographs from the Museum's collections for use in the magazine. *PB Oil & Gas* will feature a story covering the history of the photos, along with a calendar of events of monthly happenings at the Museum. This partnership has provided a wonderful collaboration to provide great historical content for *PB Oil & Gas Magazine* and give exposure to the incredible photographs in the Museum's collection. Thank you to *PB Oil & Gas* editor, **Jesse Mullins**, and to the **Permian Basin Petroleum Association** for their long-time partnership with the Petroleum Museum.

The Petroleum Museum Library and Archives Center has more than 400,000 photographic prints and negatives in its holdings. Some of these prints and negatives are available for purchase for personal, business, or research use. Reproduction and use fees apply. Go to www.pbpetro.org for more information and order forms or email **Tiffany Bradley** at tbradley@petroleummuseum.org to set up an appointment.



At Home: Loaning Art to Museum of Southwest

We were pleased to partner with the Museum of the Southwest and support their exhibit, *Retropective: Don Parks*. Two of the Museum's paintings by Parks were on loan to the Museum of the Southwest in April and May. This exhibit covered over 40 years of Parks' works. His paintings have won numerous regional awards and are included in personal, corporate and public institution collections including the Petroleum Museum's art collection.

STEAM: Addition Brings New Outdoor Areas

Not often does an organization have an opportunity to impact and enhance its community. But the Petroleum Museum is doing just that! With the addition of its STEAM Education Center, the Museum will add new educational space to its grounds while providing the community with highly interactive outdoor space. The 5,000 square foot patio will be open during Museum hours and the outside areas will feature instruments, a giant LEGO play area and a climbing structure.

The Museum's Harmony Park will give the community an opportunity to make beautiful music with no "wrong" notes. Research shows that music has positive effects on learning and memory. Our musical environment with chimes, bells and cymbals will encourage family and friends to make their own music in an outdoor envi-



Work continues on the STEAM Building. Employees of Pioneer Natural Resources built and painted the playhouse for the new addition.

ronment.

Anyone who's ever played with LEGO bricks knows there's something magical about assembling sophisticated structures from a pile of individual pieces of plastic. Now anyone can experience that fun with our modular building system of oversized blocks. Visitors will be able to dream big, stacking blocks to make their own creations.

Our new climbing structure, made pos-

sible by a grant from the FMH Foundation, will feature hand-processed irregular round logs and give young Museum visitors a place to expend some of that youthful energy. Made in Germany, our climbing structure will provide families with quality outdoor time.

The STEAM Education Center will open for our community in the fall of 2022. We will keep you posted!

APPLAUSE,
APPLAUSE

We give a round of applause to the following friends, companies and businesses. Their in-kind contributions of time, assistance or services are appreciated:

*ASCO Equipment, Inc.
XTO Energy*

Come check out our new exhibit from **Oxy** which illustrates and explains Enhanced Oil Recovery (EOR) using CO₂. This new exhibit replaces one donated by Oxy several years ago and features an enhanced model and video. Thank you to Oxy for helping us tell the oil and gas story of the Permian Basin.

Oxy
Replaces
Exhibit

ASK Dr. Petro

What is That Blue Rig at the Museum?

Question: What is the big blue rig in front of the Museum?

Dr. Petro: The National #3 Portable Drilling Machine was created in the 1930s by the National Supply Company. This rig is a somewhat modernized version of the National No. 2 (of which we also have an example in our Oil Patch). It has metal parts throughout and was able to drill to greater depths than the older wooden and combination models, up to about 4000 feet. These portable drilling rigs were an advancement in the technology of the time as previous rigs and derricks were built onsite and were then converted to producers with the addition of pump jacks. The derrick would also be utilized for well maintenance. Once portable rigs were invented, they could be used to drill multiple wells quickly and efficiently.

At the time of installation on the Museum grounds in 1976, the National #3 was completely operational and equipped to drill with a power supply in the tin shack adjacent to it.

This particular machine has great historical significance as it was used to drill the discovery well in the Shipley Field as well as the discovery well in the Netteville Field, both in Ward County. It also drilled several wells in the Abell Field. It was gifted to the Museum in 1967 by Roy Charlesworth of Odessa, Texas.



Brown Bag Lunch & Lecture

June 14

11:30 a.m. to 12:30 p.m.

Dr. Petro: Why do we experiment?

Answer: Science experiments are always fun but have you ever asked yourself why we do experiments? Join us for this special *family-friendly* Brown Bag Lunch and Lecture. Scientists young and old will enjoy learning from **Dr. Petro** about the scientific process. Free admission.

Fall Forward: Schedule Kids' Classes Now

BUILDING BOTS

The Petroleum Museum is gearing up for a science-packed fall semester. Our Building Bots Robotics & Engineering Funlabs will kick off September 6th. Building Bots classes enable students in grades K-6 to develop 21st century skills in critical thinking, creativity, and problem solving while they complete engineering challenges, robotic design, and innovative creations. Classes for students in kindergarten through 2nd grade utilize our LEGO WeDo



2.0s, LEGO Spike Essential, Osmos, and Sphero equipment while classes for 3rd through 6th grade students feature LEGO Mindstorm EV3s, LEGO Spike Prime, Osmos, and Spheros. With a variety of programming for each class, your young engineer will stay engaged throughout the semester. Building Bots Robotics & Engineering Funlabs are generously sponsored by **Oxy**.



Building Bots Robotics & Engineering Funlab Schedule:

K-2nd

Tuesday, September 6, 5:30 to 7:30 p.m.

Tuesday, October 4, 5:30 to 7:30 p.m.

Tuesday, November 8, 5:30 to 7:30 p.m.

3rd – 6th

Tuesday, September 20, 5:30 to 7:30 p.m.

Tuesday, October 18, 5:30 to 7:30 p.m.

Tuesday, November 15, 5:30 to 7:30 p.m.

STEAM SPROUTS

Our fall schedule will continue with STEAM Sprouts Folklore 6-week session beginning on Monday, September 19. STEAM Sprouts will feature hands-on STEAM (Science, Technology, Engineering, Art, Math) based curriculum for children ages 4 to 5. Students will engage in age-appropriate creative activities and engineering challenges centered around the common folklore of John Henry, Paul Bunyan, and Johnny Appleseed. With identical programming, two time sessions are available to choose from: 9:30 to 10:30 a.m. or 11:30 a.m. to 12:30 p.m. Students will be registered for the entire six-week session. Pre-registration is required. The cost is \$80 for Petroleum Museum Members and \$100 for Non-members. STEAM Sprouts is generously sponsored by **SM Energy**.



The A.M. session will feature experiential learning through experiments, engineering challenges, and inventive projects. The P.M. session will feature hands-on experiments, collaborative engineering projects, and games all centered around a popular kids' movie. Pre-registration is required. Early drop-off is available for an additional fee. STEAM Break is generously sponsored by **Ovintiv**.



Cost:

A.M. or P.M. Session ONLY: \$150

All-day Session: \$300

Museum Members receive a 10% discount. A sibling discount of \$10 off each additional sibling registered is available for our STEAM Break program only.

STEAM BREAK

During the MISD intercession week, we will be hosting our STEAM Break: Magical Science Camp. This camp will be held Monday, October 31, through Friday, November 4. STEAM Break is designed to assist parents and engage students during the fall intercession and/or for homeschool students. *STEAM Break: Magical Science* will have three session options available. Parents have the option to register their young scientist for:

A.M. session from 8 a.m. to 12 p.m.,

P.M. session from 1:00 to 5 p.m., **OR**

All-Day session from 8 a.m. to 5 p.m.

Pre-registration is required for all fall programming.

Registration will open on Monday, July 18, to Museum Members, and Thursday, July 21, to Non-members. To become a Museum Member today, visit our website at www.pbpetro.org.

Family Science Nights

Thursday, September 1

“Journey through the Jurassic”

Thursday, October 27

“Mad Science”

Thursday, January 26, 2023

“Bits & Bots”

Thursday, March 30, 2023

“Forces of Nature”

Family Science Nights are held four times each school year and are designed to engage families throughout the Permian Basin in hands-on experiments, demonstrations, and creative activities. For over 25 years, Family Science Nights have been generously sponsored by **Chevron**, which allows for these fun, science-packed evenings to be free for the public. Family Science Nights are held on select Thursdays from 6:30 to 8 p.m. Museum Members enjoy the added bonus of early admission from 6 to 6:30 pm. Be sure to mark your calendars for the 2022-2023 Family Science Nights and come experience the wonders of science throughout the Museum thanks to **Chevron**.



Membership Gives Perks All Year Long

No time like the present to join or renew your membership! Museum membership has many perks beginning with free admission, store discounts, and special invitations. To become a member, log on to our secure website at www.pbpetro.org or contact Luanne Thornton at 432-683-4403.

Welcome to our newest and renewed members from February 16 to May 11, 2022:

Contributing Family

Clarissa & Caleb Austin
Melissa Ayoub
Emily & Bjorn Baal
Albert Barkman & Michelle Finney
Paul Becker
Suzie Boyd
Eric Brorman
Beth & Brent Brugger
Mr. & Mrs. Marion E. Causey
Rachael & Sean Cherry
Michelle & Joe Cobb
Elizabeth Curtis

Linda & Mark Dinsmore
Daisy & Nathaniel Doney
Faith & Anthony Eldridge
Megan & Tom Elliott
Dr. & Mrs. Helaman Erickson
Rev. & Mrs. Dillon Ferguson
Sarah & Andre Furtado
Andrea & Chris Giese
Craig Hansen
Luanne Thornton at 432-683-4403.
Kendall Heyen
Stephanie & Tyler Hill
Brandon Hinz
Michelle & Steven Hofer
Ashley & Kevin Holdt
Emma & Bob Howard
Andrea & Coy Huffstutler
Amy & Greg Hughes
Carson Hughes
Premila & Christopher Johnson
Ami & Adam Jones
Megan & Andy Kilgore
Jackie McFarland
George McAlpine
Analisa McCain
Lauren & Blair Nutting
Erica & Jody Pavelock
Jerry Pennick
Leah Protz

Susannah Prucka & Greg Andreasen
Kristin Reed
Kimberly & Travis Reeves
Susie & Dick Reid
Sarah & Andrew Ritter
Mr. & Mrs. William C. Robinson
William F. Russell
Erika Savage
Andrea Schellenbach
Helen & Sam Sledge
Ginamarie Soto
Courtney Stuart
PJ Thompson
Jerry E. Tochtermann
Julie & Wes Turner
Jennifer Villavicencio
Heather & Jake Wilson
Mr. & Mrs. Randolph Wilson
Jodi Wrangham

Friend

Daniel Bertelson
James M. Davis
Maria & Doug Fiske
Larry Hill
JoAnne & Don McClurg
Lourcey Sams

Associate

Sandy & Mike Hale

Dr. & Mrs. George Hilal
Mr. & Mrs. Jamison McIlvain

Supporter

Kay & Don Bishop
Mr. & Mrs. Max Wright

Energy Circle

Patron

Ferrell Davis
Discovery Operating, Inc.
Five States Energy Company
Cindy & David Griffin
Bob & Pam Leibrock
Mr. & Mrs. Cadell Liedtke
Kyle Milling
Chris & Fred Newman
Permian Basin Petroleum Association
Val & Jeff Sparks
Mr. & Mrs. Herb Wacker
Karen & Roy Williamson, Jr.

Sustainer

Barbra & Trey Grafa

Benefactor

PBEX, LCLC
Pioneer Natural Resources

Chaparrals Hit the Road This Summer

On the road again....some of the Chaparrals will be on the road again this summer! The Chaparral 2 and the 2F will journey to Detroit, Michigan to be a part of the **EyesOn Design** event held on the grounds of the Edsel and Eleanor Ford Estate. EyesOn Design was founded in 1987 with the support of design heads of GM, Ford, and Chrysler as an automotive exhibition judged exclusively by automotive designers. We are proud to be invited to this prestigious event.



In August, the Chaparral 2F will travel to Salinas, California, La Guna Seca Raceway to be a part of the **Rolex Monterey Motorsports Reunion**. In addition to the racing classes, the Reunion will also gather, according to organizers, "the largest exhibition of winning or historically significant Le Mans cars ever assembled, for display" including the 2F.

These are both exciting opportunities to showcase the Chaparrals, the Petroleum Museum and the incredible story of Jim Hall.

And don't forget the **Party on the Patio** on June 11. There will be a live drive of the Chaparral 2. Members of the Pit Crew will be invited to dinner and time with Hall. Contact Luanne Thornton at 432-683-4403.

Memorials

Memorial contributions to the Petroleum Museum are deposited in the permanent endowment fund, unless donor advised, to provide ongoing tribute to the individuals recognized in bold. Donors are listed below the honoree. Contributors from February 15 to May 4, 2022, were:

IN MEMORY OF...

Judy & Leo Carr
Carey Behrends
Bob Cowan
Denise & Will Porter

Jack Darden

Denise & Will Porter
John Dorn
Denise & Will Porter
Arlen Edgar
Denise & Will Porter
Captain C.V. Lyman
Rachel Lyman Trust/
Bank of America
Cindy Schrenkel
Denise & Will Porter
Ralph Lacy Way
Patricia McMillan

IN HONOR OF...

The People's Convoy
Stephen Spruill

Notable Dates

JUNE

JUNE 1-2

STEAM Sprouts Mini-Camp: "LEGO Maker"
9:30 to 11 a.m. OR 12:30 to 2 p.m.
Ages 4-5
Museum members, \$40; Non-members, \$50
Pre-registration required. For more information or to register online, visit www.pbpetro.org.
Sponsor: **SM Energy**

JUNE 6

Movie Maker Monday
"Rumble"
1 to 5 p.m.; Ages 6-12
Museum members, \$10; Non-members, \$15
Pre-registration required. For more information or to register online, visit www.pbpetro.org.
Sponsor: **Oxy**

JUNE 8-10

Summer Science Camp: "Rockin' Rockets"
9 a.m. to 12 noon OR 1:00 to 4 p.m.
Ages 6-8
Museum members, \$60; Non-members, \$75
Pre-registration required. For more information or to register online, visit www.pbpetro.org.
Sponsor: **Oxy**

JUNE 11

10th Annual Chaparral Party on the Patio
6 to 8 p.m.
Chaparral 2 Live Drive, Dinner and Q&A with Jim Hall
Ticketed Event for Pit Crew Fan Club members ONLY.
Join today at pbpetro.org.
RSVP to Luanne Thornton, 683-4403, or
lthornton@petroleummuseum.org.

JUNE 14

Brown Bag Lunch & Lecture Series
Speaker: Dr. Petro (Greg Hinterlong)
"Why Do We Experiment?"
11:30 a.m. to 12:30 p.m.
Free admission. Drinks and dessert provided.
Sponsors: **Norma J. McGrew & Hahl Proctor Charitable Trust, Bank of America, N.A. Trustee**

JUNE 15-17

Summer Science Camp: "LEGO Robotics"
9 a.m. to 12 noon; ages 6-8
Museum members, \$60; Non-members, \$75
Pre-registration required. For more information or to register online, visit www.pbpetro.org.
Sponsor: **Oxy**

JUNE 20

Movie Maker Monday
"Luca"
1 to 5 p.m.; Ages 6-12
Museum members, \$10; Non-members, \$15
Pre-registration required. For more information or to register online, visit www.pbpetro.org.
Sponsor: **Oxy**

JUNE 22-24

Summer Science Camp: "Wild About Science"
9 a.m. to 12 noon; ages 6-8
Museum members, \$60; Non-members, \$75
Pre-registration required. For more information or to register online, visit www.pbpetro.org.
Sponsor: **Oxy**

JULY

JULY 4

Movie Maker Monday
"Raya and the Last Dragon"
1 to 5 p.m.; Ages 6-12
Museum members, \$10; Non-members, \$15
Pre-registration required. For more information or to register online, visit www.pbpetro.org.
Sponsor: **Oxy**

JULY 11-14

Summer Science Camp: "Making Makers"
8 a.m. to 12 noon OR 1:00 to 5 p.m.; Ages 8-12
Museum members, \$80; Non-members, \$100
Pre-registration required. For more information or to register online, visit www.pbpetro.org.
Sponsor: **Oxy**

JULY 18

Movie Maker Monday
"Hotel Transylvania: Transformia"
1 to 5 p.m.; Ages 6-12
Museum members, \$10; Non-members, \$15
Pre-registration required. For more information or to register online, visit www.pbpetro.org.
Sponsor: **Oxy**

JULY 25-28

Summer Science Camp: "LEGO Mini Masters: Shakin' City"
8 a.m. to 12 noon OR 1:00 to 5 p.m.; Ages 8-12
Museum members, \$80; Non-members, \$100
Pre-registration required. For more information or to register online, visit www.pbpetro.org.
Sponsor: **Oxy**

AUGUST

AUGUST 9

Brown Bag Lunch & Lecture Series
Speaker: TBD
11:30 a.m. to 12:30 p.m.
Free admission. Drinks and dessert provided.
Sponsors: **Norma J. McGrew & Hahl Proctor Charitable Trust, Bank of America, N.A. Trustee**

SEPTEMBER

SEPTEMBER 1

Family Science Night: "Journey Through the Jurassic"
6:30 to 8:30 p.m.
6 p.m. Early Admission for MEMBERS ONLY.
Hands-on Science Experiments & Activities
Free admission.
Sponsor: **Chevron**

SEPTEMBER 6

Building Bots: Robotics & Engineering FunLab
5:30 to 7:30 p.m.; Grades K-2nd
Pre-registration required. For more information or to register online, visit www.pbpetro.org.
Sponsor: **Oxy**

SEPTEMBER 13

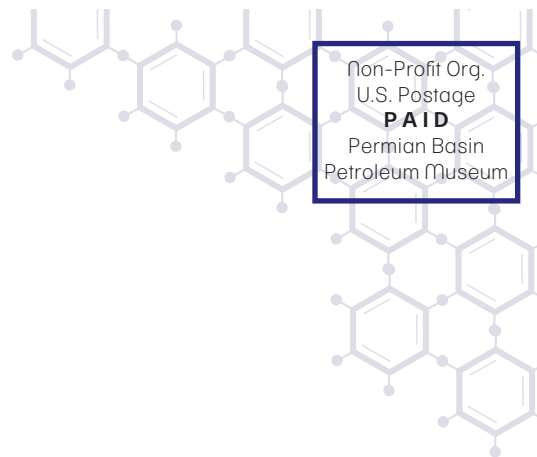
Brown Bag Lunch & Lecture Series
Speaker: TBD
11:30 a.m. to 12:30 p.m.
Free admission. Drinks and dessert provided.
Sponsors: **Norma J. McGrew & Hahl Proctor Charitable Trust, Bank of America, N.A. Trustee**

*For more information about any of these programs or events,
contact the Petroleum Museum at 432-683-4403 or www.pbpetro.org.*

PETROLEUM MUSEUM

Permian Basin Petroleum Museum, Library and Hall of Fame
1500 Interstate 20 West • Midland, Texas 79701

Address Service Requested



Museum Staff

KATHY SHANNON
Executive Director
LUANNE THORNTON
Development Director
MARA BLAND
Education/Marketing
Director
JENNY STUBBS
Outreach & Programs
Director
BRYAN GRANT
Rentals Director
TIFFANY BRADLEY
Collections Manager
JAMES WHITE
Facilities Manager
LISA WORDEN
Finance Manager

STEPHANIE HERNANDEZ
Museum Store Manager
LETTY RUBIO
Office Manager
GEMMA LOPEZ
Tours Coordinator
KEVIN LUTZ
Facilities Assistant
GARY KING
Museum Store Assistant
JAMIE RUEHLEN
Museum Store Assistant
KEITH DOUCET
Chaparral Specialist/IT
STACIE HANNA
Marketing Consultant
LANA CUNNINGHAM
Public Relations Consultant

Museum Bit & Bytes is published quarterly by the Petroleum Museum. For more information call 432-683-4403 or visit the website at pbpetro.org.

6/22

The Museum Store



Race into the Petroleum Museum Store for Chaparral gear you can't get anywhere else! Plus, know that your purchase supports the Museum! Museum Members always receive **15 percent off** purchases. We are open from 10 a.m. to 5 p.m. Monday through Saturday and 2 to 5 p.m. on Sunday. Or, shop online at pbpetro.org/shop anytime.

Our Mission: We will share the petroleum and energy story and its impact on our lives.